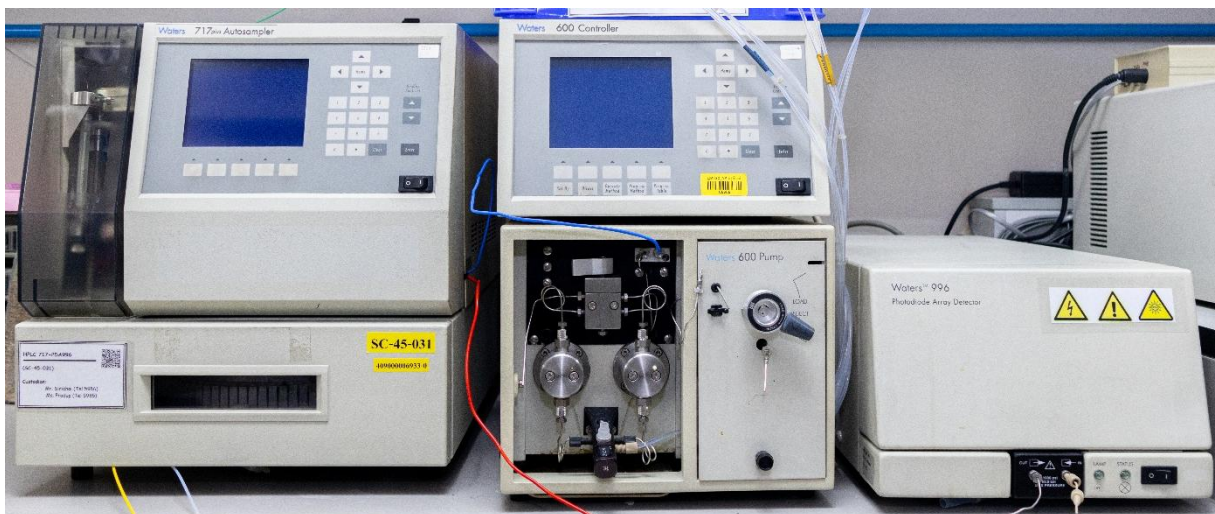


High Performance Liquid Chromatography (HPLC)



Brand: WATERS

Model: HPLC-Pump600-Autosampler717plus-PDA996

Location: K652 Room, 6th Floor, Chaloemprakiet Building, Phyathai

Custodian: PRADUP MESAWAT

WATERS 600E Multi solvent Delivery

Description		Specification
Waters 600E Multi solvent Delivery System		
Number of solvents		1 to 4
Automatic eluents sparging		Helium, programmable eluent selection and rate (0 – 100 mL/min)
Flow programmable		Isocratic, gradient, and flow programming
Flow rate range		0.00 – 20.00 mL/min, in 0.01 increments
Composition range		0 to 100%, in 1% increments for each of four reservoirs
Compositional accuracy		Better than 1.0%, independent of pressure

Description		Specification
Waters 600E Controller		
LCD Display		5 inch
Program tables		flow rate, gradient, timed events 15 time-based step/table, 15 table capacity
Time-based multi-method capacity		includes linking Program table

- [MILLENNIUM 32 Chromatography Manager Software](#)
- [COMPAQ 3650TH Computer](#)



WATERS 717 plus Autosampler

Description	Specification
Number of solvents	1 to 4 solvents
Degasser	Helium degassing
Linearity (1 to 100 μL)	At 1 to 100 μL , Coefficient of deviation > 0.99
Carryover	< 0.1%
System pressure	4500 psi
Bandspreading	< 10% Contribution for all solvent systems
Precision of injector	At 5 to 50 μL , RSD \leq 0.5%
Flow accuracy	\pm 1% or 10 $\mu\text{L}/\text{min}$
Number Sample/tray	1. Tray for sample 1 to 48 vial (vial 4 mL) 2. Tray for sample 1 to 96 vial (via 1 1 mL)
Number for injection by program	1 to 99 vial
Minimum Sample Required	7 μL using low volume inserts
Injection accuracy	\pm 1 μL
Injection volume range	0 to 200 μL (Standard) or 0 to 2000 μL
Total solvent volume	836 μL
Run time	0 to 999.9 min
Wash Flow, Solvent Rate	> 0.4 mL per injection
Advance Sampling Routines	Priority Samples, Auto Standards, Auto Addition, and Auto Transfer
Operating Temperature Range	4 to 40 $^{\circ}\text{C}$



WATERS 996 Photodiode Array Detector (PDA)

Description		Specification
Wavelength range		190 – 800 nm
Wavelength accuracy		± 1 nm
Linearity range		5% over – 0.1 to 2.0 AU
Spectra resolution		1.2 nm per photodiode
Baseline noise		5×10^{-5} AU peak-to-peak at 254 nm
Drift		1×10^{-3} AU/hour at 254 nm (after warm-up)
Operating temperature		4 to 40 °C
Flow cells		Path length (mm)
- Standard		10

