

Creating bibliographic reference with EndNote

Suang Udomvaraphunt

Academic IT

Stang Monkolsuk library and Information division

Faculty of Science, Mahidol University

Release : 1.3.265



What is EndNote

- **Bibliographic management software**

- **Online research tool**

search online bibliographic databases and retrieve the references directly into EndNote.

- **Reference and image database**

Storing, managing, and searching for bibliographic references in your private reference library.

Organize images, including charts, tables, figures, and equations, and assign each image its own caption and keywords

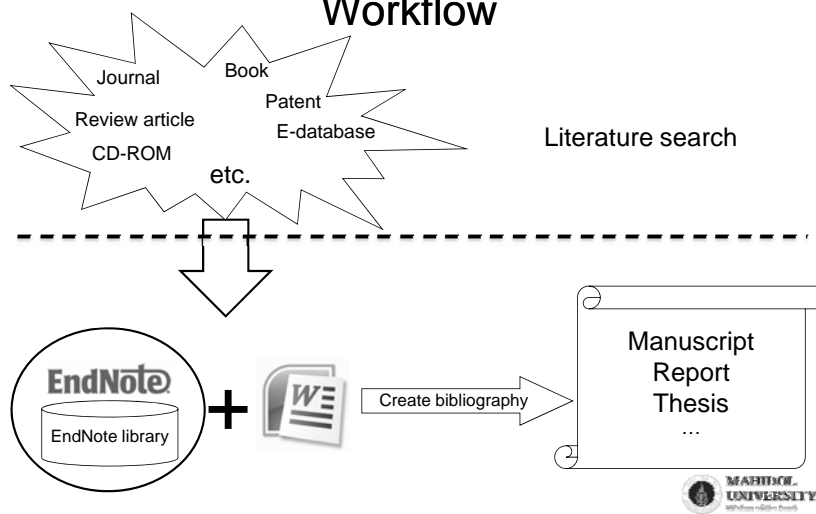
- **Bibliography and manuscript maker**

formats citations, figures, and tables in Microsoft Word with the Cite While You Write™ feature.

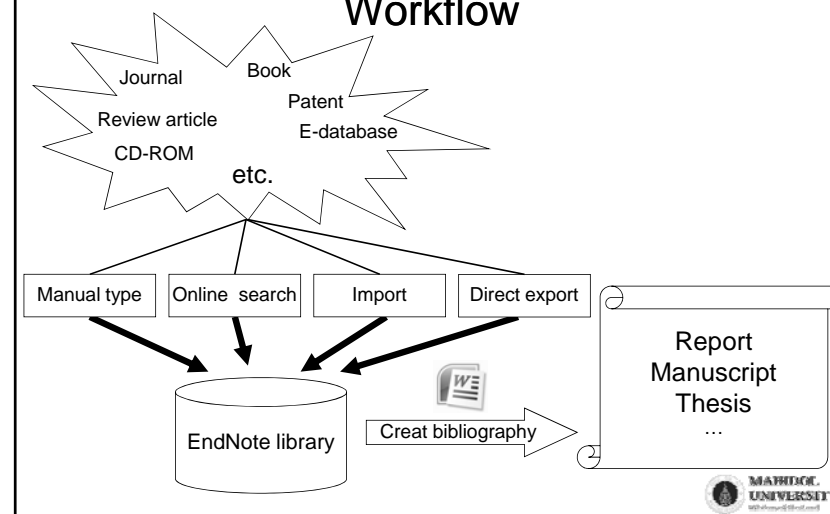
- **Other compatible software : Reference manager, Procite, Refwork, Zotero, Mendeley etc...**



Workflow



Workflow



Hardware requirement

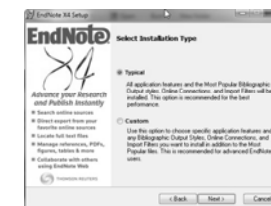
	EndNote 9, X, X1	EndNote X2/X3	EndNote X4
CPU	Pentium 450 MHz or more		
Memory (RAM)	128 MB or more	256 MB or more	
OS	Windows 2000 / XP / Vista	Windows XP SP2+ / Vista	Windows XP SP3 / Vista / 7
Word processing software	MS Word 2000+	MS Word 2003-2007 OpenOffice Writer	MS Word 2003-2010 OpenOffice Writer

MS Word 2010 users must use EndNote X4



EndNote typical and custom installation

There are some different between typical and custom installation (number of component files)

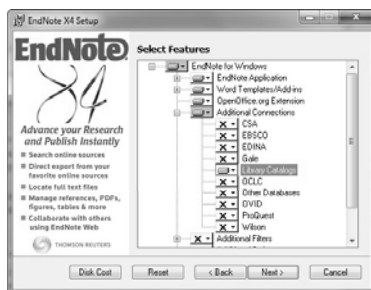


Release : 1.3.265



Compare typical and custom installation

Connections – online search



Release : 1.3.265



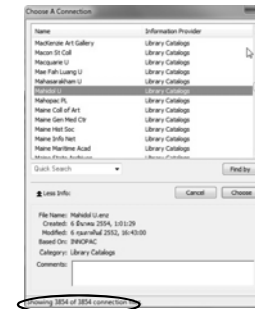
Compare typical and custom installation

Typical install → 100

Custom install → 3,854+

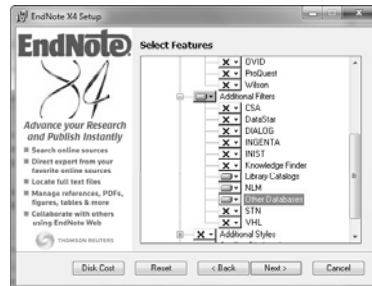


Release : 1.3.265



Compare typical and custom installation

Import filter – import data



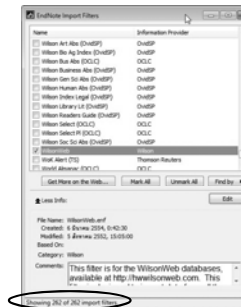
Release : 1.3.265



Compare typical and custom installation

Typical install → 262

Custom install → 345+

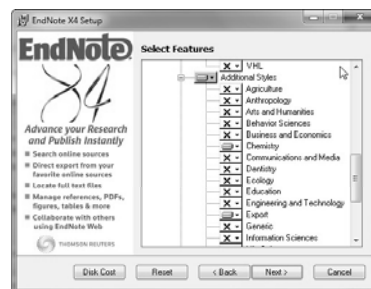


Release : 1.3.265



Compare typical and custom installation

Styles – output styles (journal format)



Release : 1.3.265



Compare typical and custom installation

Typical install → 263

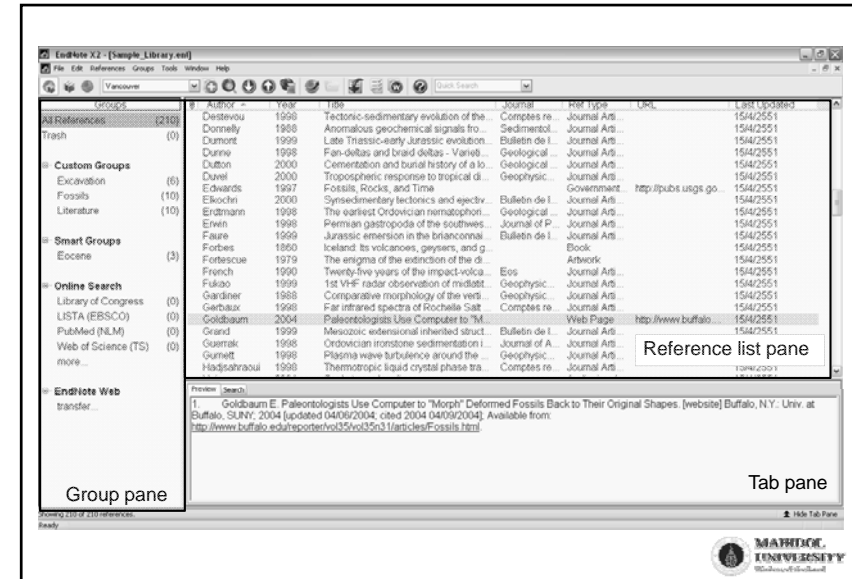
Custom install → 2,385+



Release : 1.3.265



EndNote overview

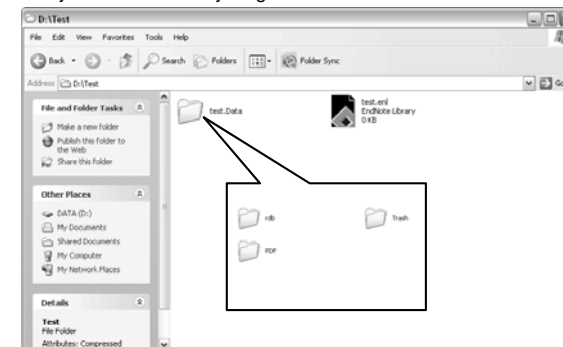


Introduction to Endnote interface



Library composition

- Each Endnote library contains 1 library file (*.enl) and 1 .Data folder (keep the attached PDF and picture files)
- Creating new library file in a folder and copy the whole folder if needed to make sure that you don't lose anything.



Journal term list : Things to do for new library

- The first thing to do after make a new library file is define journal term list
- Journal term list is lists of journal name in full and abbreviated form
- These lists are used for making correct journal name in reference (It's needed for output style that used journal in abbreviated form i.e. Vancouver)
- Help EndNote works correctly find out the duplicate references
- Define the journal term list only once but have to be done in every library file



Why need Journal term list (1)

- Correct finding duplication references (in Find duplicates command)
- Correct Journal name in Vancouver and other output style that need abbreviated format



Why need Journal term list (2)

The same reference imported from SCOPUS (upper) and PubMed (lower) that give difference journal name in vancouver style before define Journal term list



Before Journal Termlist

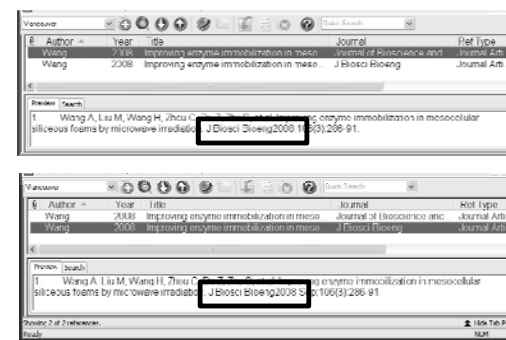
SCOPUS give full name

PubMed give abbreviated name

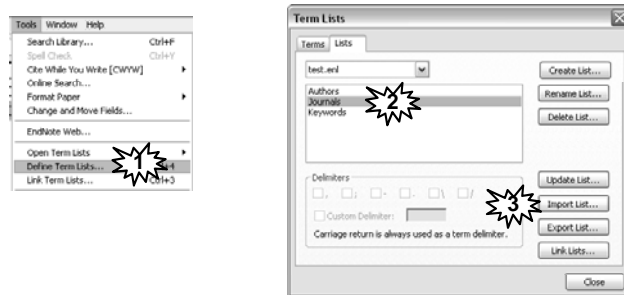


Why need Journal term lists (3)

After defined Journal Term Lists, both give abbreviation form



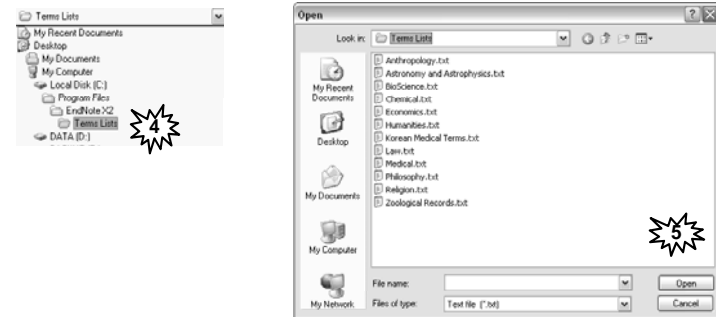
To define Journal Term lists



1. At menu Tools / Define Term Lists...
2. In the Term Lists windows, select tab Lists, then select Journals
3. Click Import Lists... button



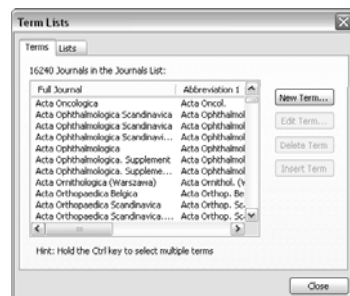
Journal Term lists (2)



4. Browse to folder c:\Program files\EndNote X2\Term Lists\
5. Select the appropriated term lists files (BioScience, Chemical, Medical)



Journal Term lists (3)



Click at the tab Terms looking for the journal lists



How to input data



Data input

There are 4 methods

1. Manual type
2. Online search by using Endnote's connection file connect to online database or library catalog
3. Import from file search from web browser then save the result and import into EndNote



Data input (2)

4. Direct Export from web site can be use in some databases

Thomson Scientific (ISI)	American Psychological Association
Bausch & Lomb	BioMedCentral
BioMedNet	BMJ
Buffalo University	EBSCO
EI Engineering	Elsevier
EMBASE	IEEE
JAMA	JSTOR
Karger Publishing	Los Alamos National Laboratory
MicroPatent	NERAC
NISC	OCLC
OVID	Oxford Press Journals
Science Magazine	Stanford University's Highwire Press
Teled	etc.

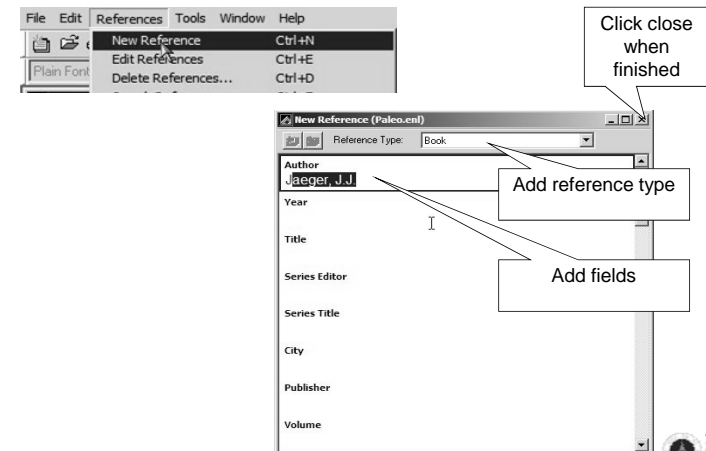


Data Input

Method 1 : Manual typing



Manual typing



Manual typing (2)

Author name :

❑ One author / line

❑ Author name format

- Last_name, First_name Middle_name
- First_name Middle_name Last_name
- Institute / Thai name add comma(,) at the end
 - Mahidol University,
 - คณะวิทยาศาสตร์ มหาวิทยาลัยมหิดล,
 - สรวง อุคมวรพันธ์,



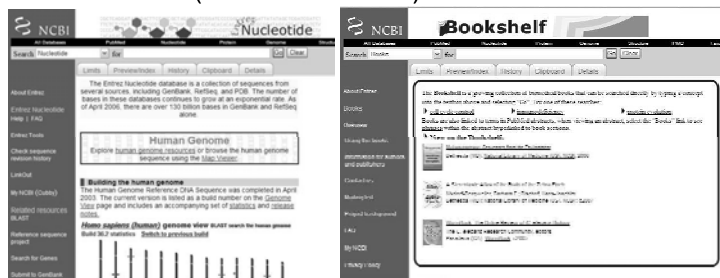
Sample database : PubMed

- Produced by NLM (U.S. National Library of Medicine)
- Major database : MEDLINE and others life science journal since 1950



Sample database : PubMed

- Other databases :
 - Entrez nucleotide (GenBank - nucleotide, RefSeq – sequences , PDB - protein) and analysis tools.
 - Bookshelf (E-book in biomedicine)



Sample database : PubMed

- There are 2 methods to import data in EndNote library
 - Online search (Connection in older version of Endnote)
 - Import filter



Data Input

Method 2 : Online search



Before doing Online search

■ Start since Endnote X1.01

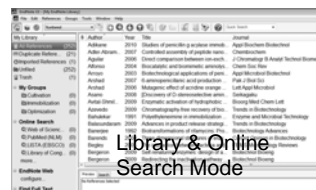
Endnote develop 3 display modes

- Library & Online Search Mode
- Local Library Mode
- Online Search Mode

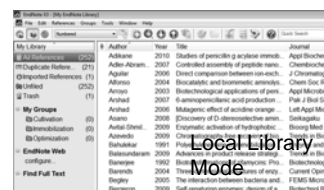


■ Library & Online Search Mode

- ❖ Integrated Mode, with all groups and commands available.
- ❖ Online search results downloaded directly into your open library



Library & Online Search Mode



Local Library Mode

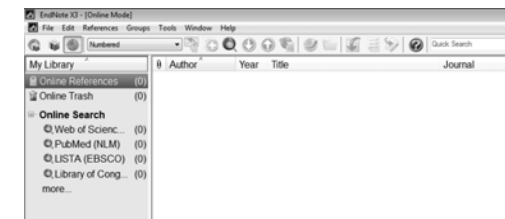
■ Local Library Mode

- ❖ the Online Search groups are not available.
- ❖ All local library commands are available.

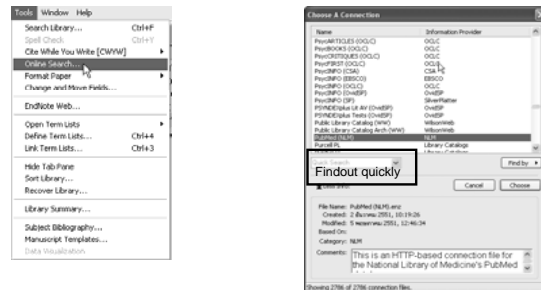


■ Online Search Mode

- ❖ only the Online Search groups are available.
- ❖ When downloading references from an online database, the references are stored in a temporary library until they are saved to a permanent EndNote library..
- ❖ Useful when you don't want the search results affect your local library.



Online search (Connection)



Direct connect from endnote to remote databases

- Need connection file for connecting to the database
- Connection file were prepared by EndNote or manual editing
- In Thailand available connection are PubMed, ISI WOS, University libraries



Demonstration : connection to PubMed



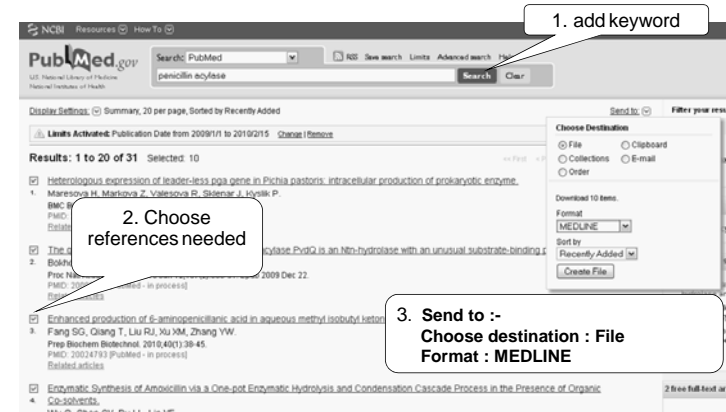
Data Input

Method 3 : Import filter

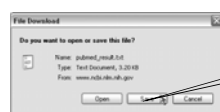
- PubMed
- Science finder
- H.W. Wilson



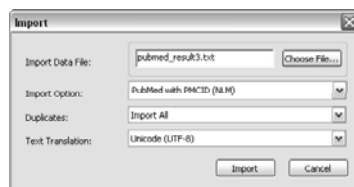
Import filter : Pubmed



Import filter : Pubmed



4. Save the result to file



5. Endnote use "File / Import" command

6. Select suitable import filter to import the data into library



Demonstration import data from PubMed



Sample database : SciFinder Scholar 2007 and SciFinder Web

- Produced by CAS (Chemical Abstract Service)
 - CA Plus (Chemical Abstract database) since 1907 + patent
 - MEDLINE (PubMed)
 - Search by Chemical reaction
 - Search by Chemical name
 - Search by Chemical formula
 - etc...
- Need special search software (SciFinder Scholar)
- Subscribe by Mahidol University for 4 accounts @ 1 M Baht / account
 - SciFinder Scholar client 2 users
 - SciFinder web 2 users



Sample database : SciFinder Scholar 2007

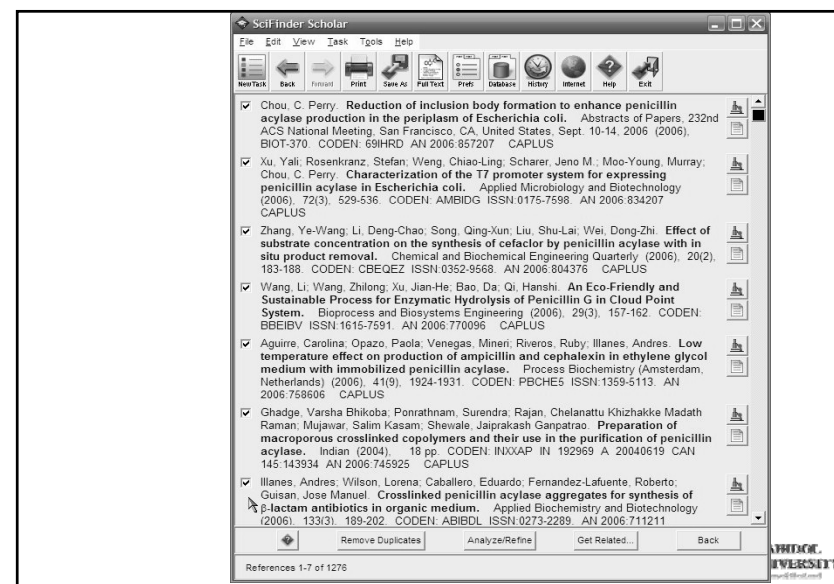
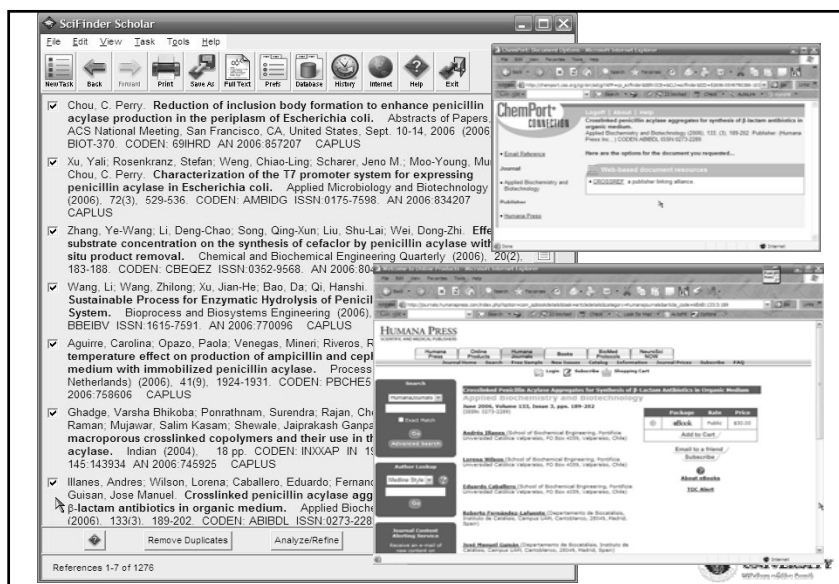
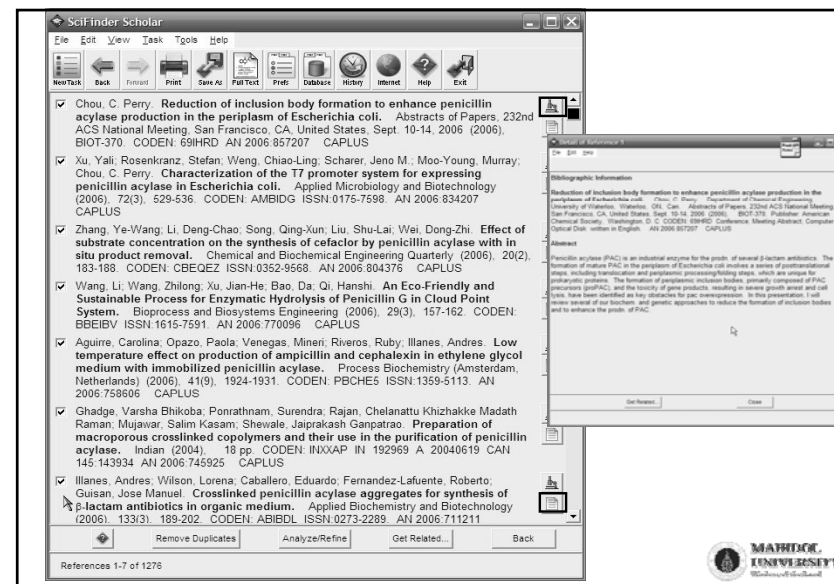
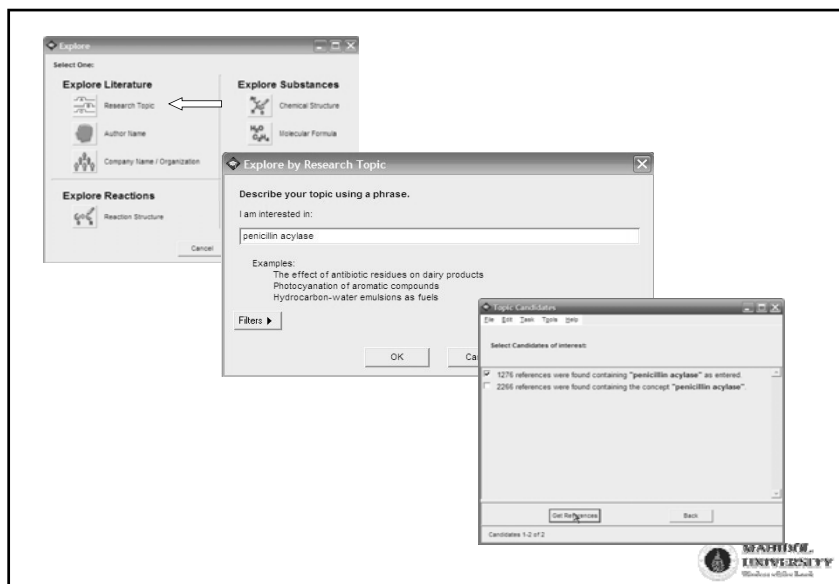


Start program



Select Explore





Import filter : SciFinder Scholar 2007 (1)



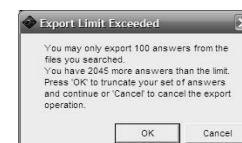
1. Select references
2. Save the results by using "Save As..." command



Import filter : SciFinder Scholar 2007 (2)



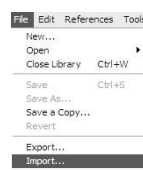
3. Change file type to "Tagged format"



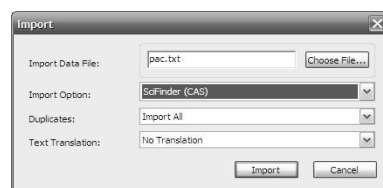
4. SciFinder limit the data to be exported at 100 records each time



Import filter : SciFinder Scholar 2007 (3)



5. Import the save results into Endnote with "File / import" command



6. Use "SciFinder (CAS)" as import filter



H.W. Wilson

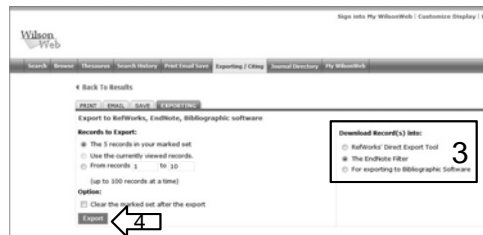


1. From searching results, select the articles needed.
2. Click tab "Exporting/Citing".



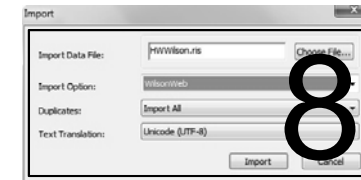
H.W. Wilson

3. Select "Download Record(s) into:" as "The EndNote Filter"
4. Click Export



H.W. Wilson

5. Save the export data (default is "HWWilson.ris")
6. In EndNote
7. Click at File / Import...
8. Import data by using "Wilsonweb" as Import option



Data Input

Method 4 : Direct export

- Science Direct
- ISI Web of Science
- Google scholar
- EBSCOHost & CINAHL Plus with full text

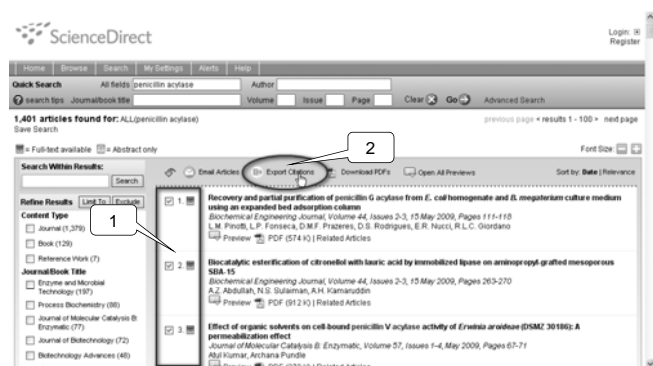


Science Direct

(Direct export)



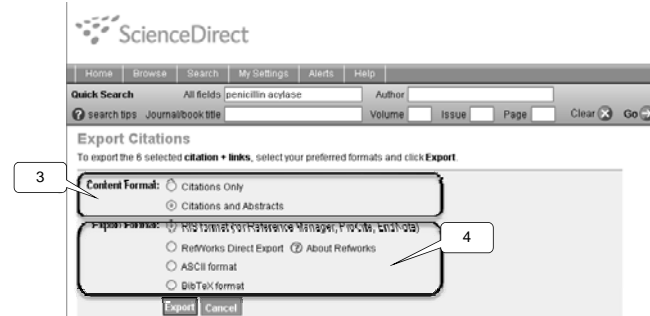
Direct export from website : Science Direct



1. Mark the references you need
2. Click the Export Citations button



Direct export from website : Science Direct



3. Select the option (citation / citation+abstract)
4. Select RIS format as Export format
5. Click Export button
6. Endnote will active ask for the library file to keep the data



Demonstration

Direct export from Science Direct



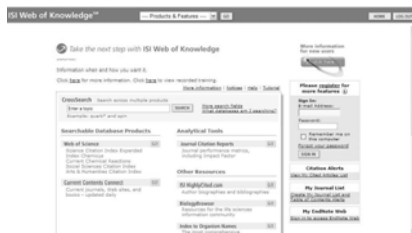
ISI Web of Knowledge (ISI Web of Science)

(Direct export)

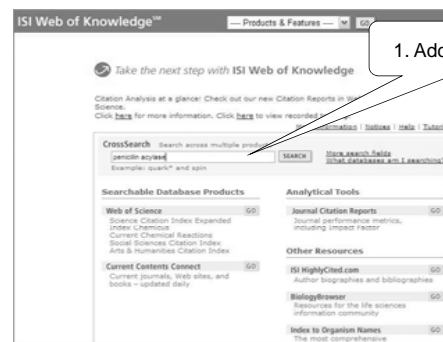


Sample database : ISI Web of Knowledge

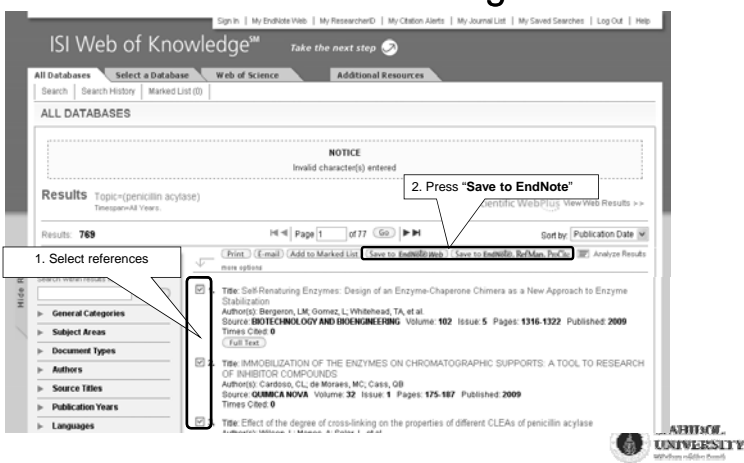
- Produced by Thomson Scientific
- Contain several databases
 - ISI Web of Science (Science Citation Index, Index Chemicus, Current Chemical Reactions)
 - Current Content Connect
 - ISI HighlyCited.com
- Subscribe by ThaiLIS



Sample database : ISI Web of Knowledge



Sample database : ISI Web of Knowledge



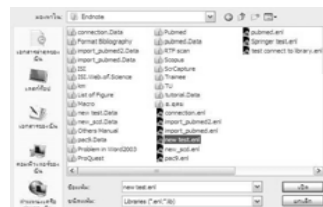
Sample database : ISI Web of Knowledge



Do more changes :
Go to the bottom of the page and select more options



Sample database : ISI Web of Knowledge



8. EndNote will be activated automatically
9. Select library file
10. Selected data will be added

Environmental Toxicology			
Author	Year	Title	URL
Zhang	2007	Cloning and characterization of penicillin V acylase from Streptomyces mobaraensis	<Go to ISI>://0002
Cabrera	2007	Asymmetric hydrolysis of dimethyl phenylmalonate by immobilized penicillin G acyla...	<Go to ISI>://0002
Pedroche	2007	Effect of the support and experimental conditions in the intensity of the multipoint co...	<Go to ISI>://0002
Jager	2007	Hybrid penicillin acylases with improved properties for synthesis of beta-lactam anti...	<Go to ISI>://0002



Sample database : Google Scholar

Importing data into EndNote

5. click on the "Import into EndNote" link.
6. From "file download" windows, choose to open the file and select an EndNote library file.



EBSCO

(Direct export)



Sample database : EBSCO : Academic search complete CINAHL Plus with full text

- Produced by EBSCO
- Cover several subject databases for education, medical, public, corporate and school libraries.
- Provided their own full text PDF (scan from printed journal)
- Subscribed by Mahidol University.



Sample database : EBSCO : Academic search complete

1. Enter keyword and select the appropriate limiter, click “Search button



Sample database : EBSCO : Academic search complete

2. From search results, select the references needed by click on the Add to folder button.
3. When finish selection click on “Folder view” icon



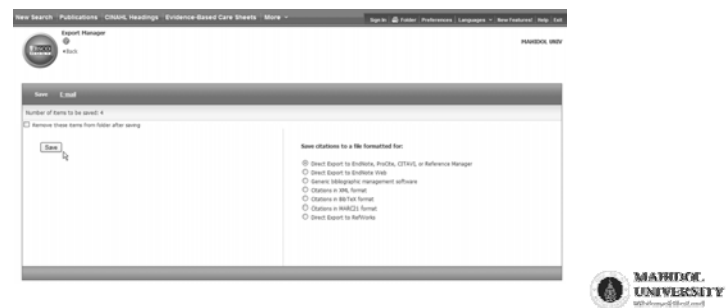
Sample database : EBSCO : Academic search complete

4. Click “Export”.



Sample database : EBSCO : Academic search complete

6. Select export option as “Direct Export to Endnote....”
7. Click “Save”
8. Select Endnote library file to collect exported data.



Google Scholar

(Direct export)



Sample database : Google Scholar

- Produced by Google
- Search specifically for scholarly literature, including peer-reviewed papers, theses, books, preprints, abstracts and technical reports from all broad areas of research.
- Free database



Sample database : Google Scholar

- Set GoogleScholar preferences
1. Click on "Scholar preferences"



Sample database : Google Scholar

2. Under "Bibliography Manager" select the option "Show links to import citations into" and choose "EndNote" in the drop down box.
3. Click on the "Save Preferences" button



Sample database : Google Scholar

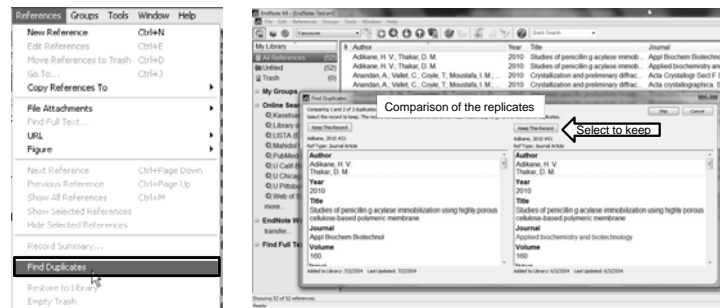
4. Search using selected keyword



Maintenance the library



Find Duplicates



To get rid of the duplicate records;

1. Select menu "References" / "Find Duplicates"
2. EndNote show the duplicates in "Duplicate References" group



Find Duplicates (2)



3. All references group : show all record and highlight the second set
 4. To delete the duplicate : drag the selected references to "Trash group"
- Delete duplicate references every time before making bibliography



Creating manuscript

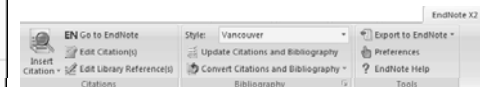
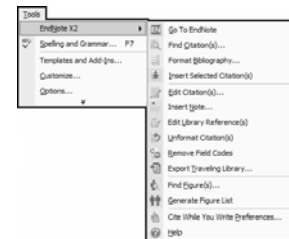


EndNote in MS Word

After installing EndNote, there is EndNote menu appear in MS Word menu

Word XP/2003

Word 2007

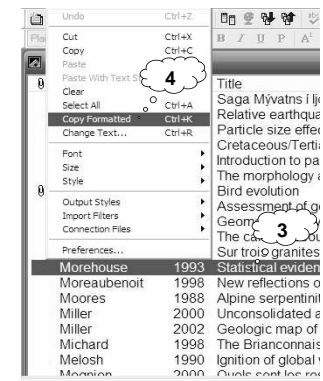


Creating manuscript in MS Word 2003



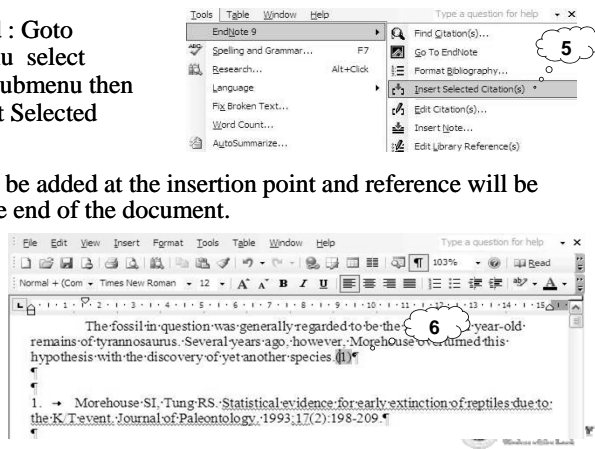
Creating manuscript in Word 2003

1. Open MS Word and EndNote
2. @ MS Word : type the document until reach the point to insert citation
3. @ EndNote : select the reference you need
4. From "Edit" menu choose "Copy formatted"



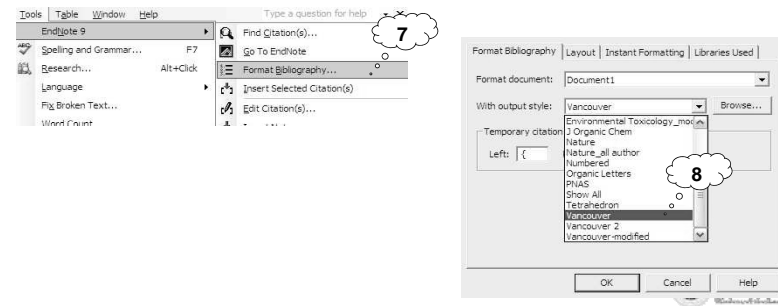
Creating manuscript in Word 2003 (2)

5. @ MS Word : Goto “Tools” menu select “EndNote” submenu then select “Insert Selected Citation(s)”
6. Citation will be added at the insertion point and reference will be created at the end of the document.



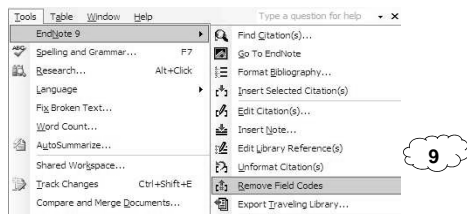
Change the bibliographic format in Word 2003 (1)

7. @ MS Word : Goto “Tools” menu select “EndNote” submenu then choose “Insert Selected Citation(s)”
8. Click dropdown list to select the proper output style or click “Browse” button then select the output style from list



Change the bibliographic format in Word 2003 (2)

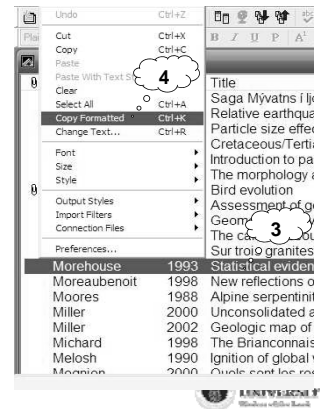
9. Goto “Tools” menu select “EndNote” submenu then select “Remove Field Codes” to remove fieldcode created by EndNote
- *** important a must step ! Otherwise this file can not be open in other machine***



Creating manuscript in MS Word 2007

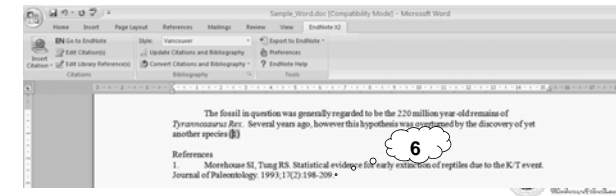
Creating manuscript in Word 2007

1. Open MS Word and EndNote
2. @ MS Word 2007 : type the document until reach the point to insert citation
3. @ EndNote : select the reference you need
4. From "Edit" menu choose "Copy formatted"



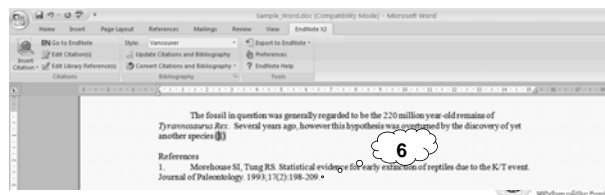
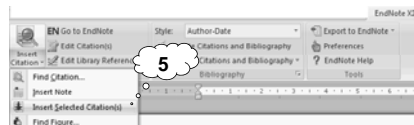
Creating manuscript in Word 2007 (2)

5. @ MS Word 2007 : Goto "EndNote X2" tab select "Citation" command group "Insert Citation" drop down list then select "Insert Selected Citation(s)"
6. Citation will be added at the insertion point and reference will be created at the end of the document.



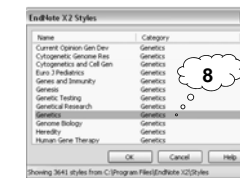
Creating manuscript in Word 2007 (2)

5. @ MS Word 2007 : Goto "EndNote X2" tab select "Citation" command group "Insert Citation" drop down list then select "Insert Selected Citation(s)"
6. Citation will be added at the insertion point and reference will be created at the end of the document.



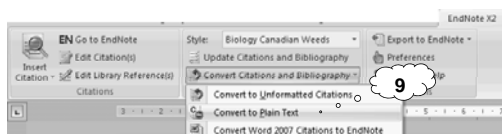
Change the bibliographic format in Word 2007 (1)

7. @ MS Word 2007: Goto "Endnote X2" tab at "Bibliography" command group select "Style" list and choose the appropriated style or *Select Another Style...* for more styles
8. Select the output style from list



Change the bibliographic format in Word 2007 (2)

- When every things finished
Click on **“Convert Citations and Bibliography”** list and select **“Convert to Plain Text”** to remove fieldcode created by EndNote
- *** important a must step ! Otherwise this file can not be open in other machine that no EndNote software installed***



Add reference in word 2007 (1)

To add more references into the formatted citation

The fossil in question was generally regarded to be the 220 million year old remains of *Tyrannosaurus Rex*. Several years ago, however this hypothesis was overturned by the discovery of yet another species (1) which is now the undisputed progeny of the species at hand (2,3). While the true origin of this larger reptile is quite uncertain at this time, it is thought to be from central or eastern Asia.

References

1. → Morehouse SI, Tung RS. Statistical evidence for early extinction of reptiles due to the K/T event. *Journal of Paleontology*. 1993;17(2):198-209.
2. → Argus MV, Matthews EK. Stratigraphic excavation techniques for paleontologists. *Journal of Paleontology*. 1991;17:119-27.
3. → Turnhouse MB. Role of 14C dating in paleontology. *Journal of Paleontology*. 1987;75(6):11-5.

Need to add Argus (1993) at the position between citation (2,3)



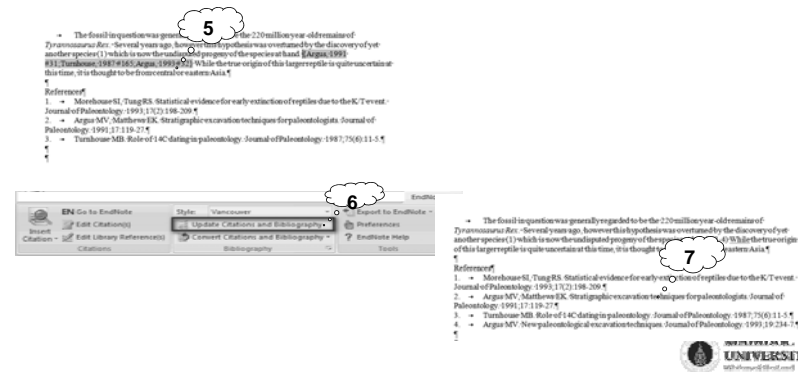
Add reference in word 2007 (2)

- Put the cursor in the position.
- Choose **“Find Citation...”** command
- Search for the reference you needed by typing the appropriated keyword.
- Select the references needed and press Insert button



Add reference in word 2007 (3)

- The inserted reference will be added
- Reformat the manuscript



Removing reference in word 2007 (1)

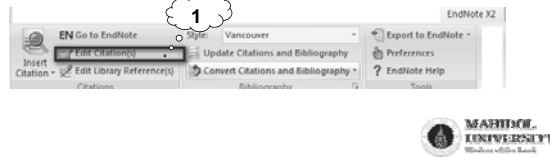
To remove some references from the formatting manuscript

1. Select the "Edit Citation(s)" command

The fossil in question was generally regarded to be the 220 million-year-old remains of *Tyrannosaurus Rex*. Several years ago, however, this hypothesis was overturned by the discovery of yet another species (1) which is now the undisputed progeny (2,3) of the species at hand. While the true origin of this larger reptile is quite uncertain at this time, it is thought to be from central or eastern Asia.

References

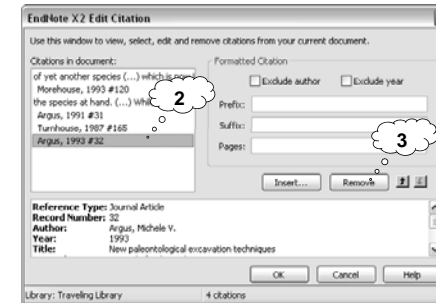
1. Morehouse SI, Tung RS. Statistical evidence for early extinction of reptiles due to the KT event. *Journal of Paleontology*. 1993;17(2):198-209.
2. Argus MV, Matthews EK. Stratigraphic excavation techniques for paleontologists. *Journal of Paleontology*. 1991;17:119-27.
3. Turnhouse MB. Role of 14C dating in paleontology. *Journal of Paleontology*. 1987;7(6):11-5.
4. Argus MV. New paleontological excavation techniques. *Journal of Paleontology*. 1993;19:234-7.



Removing reference in word 2007 (2)

To remove some references from the formatting manuscript

2. From the Edit Citation dialog box :
Select the reference want to remove
3. Press the Remove button



Formatted & Unformatted form

The fossil in question was generally regarded to be the 220 million-year-old remains of *Tyrannosaurus Rex*. Several years ago, however, this hypothesis was overturned by the discovery of yet another species (1) which is now the undisputed progeny (2,3) of the species at hand. While the true origin of this larger reptile is quite uncertain at this time, it is thought to be from central or eastern Asia.

Where the other species (1) arose is a mystery. If it was central Asia, we could reasonably infer that other reptiles were not dominant in this ecosystem. Some think that we will never know (Biloski, 1987 #16; Schwartz, 1976 #24; Whiting, 1987 #27). However, fossils currently in the museum in Berlin provide strong evidence that the emerging reptile was small-boned and duck-billed (7), possibly with a larger wing-like arm.

Unformatted form – quickly operates but not understand

The fossil in question was generally regarded to be the 220 million-year-old remains of *Tyrannosaurus Rex*. Several years ago, however, this hypothesis was overturned by the discovery of yet another species (1) which is now the undisputed progeny (2,3) of the species at hand. While the true origin of this larger reptile is quite uncertain at this time, it is thought to be from central or eastern Asia.

Where the other species (1) arose is a mystery. If it was central Asia, we could reasonably infer that other reptiles were not dominant in this ecosystem. Some think that we will never know (5-7). However, fossils currently in the museum in Berlin provide strong evidence that the emerging reptile was small-boned and duck-billed (7), possibly with a larger wing-like arm.

Formatted form – slower operates but look in real form

1. Morehouse SI, Tung RS. Statistical evidence for early extinction of reptiles due to the KT event. *Journal of Paleontology*. 1993;17(2):198-209.
2. Argus MV, Matthews EK. Stratigraphic excavation techniques for paleontologists. *Journal of Paleontology*. 1991;17:119-27.

Release : 1.3.265

Show fieldcode (Alt+F9)

The fossil in question was generally regarded to be the 220 million-year-old remains of *Tyrannosaurus Rex*. Several years ago, however, this hypothesis was overturned by the discovery of yet another species (1) which is now the undisputed progeny (2,3) of the species at hand. While the true origin of this larger reptile is quite uncertain at this time, it is thought to be from central or eastern Asia.

Where the other species (1) arose is a mystery. If it was central Asia, we could reasonably infer that other reptiles were not dominant in this ecosystem. Some think that we will never know (5-7). However, fossils currently in the museum in Berlin provide strong evidence that the emerging reptile was small-boned and duck-billed (7), possibly with a larger wing-like arm.

The fossil in question was generally regarded to be the 220 million-year-old remains of *Tyrannosaurus Rex*. Several years ago, however, this hypothesis was overturned by the discovery of yet another species (1) which is now the undisputed progeny (2,3) of the species at hand. While the true origin of this larger reptile is quite uncertain at this time, it is thought to be from central or eastern Asia.

Where the other species (1) arose is a mystery. If it was central Asia, we could reasonably infer that other reptiles were not dominant in this ecosystem. Some think that we will never know (5-7). However, fossils currently in the museum in Berlin provide strong evidence that the emerging reptile was small-boned and duck-billed (7), possibly with a larger wing-like arm.

Release :

Demonstration : Making bibliography



Sharing with Colleague



- Export the library by using command
- File / Export... with Endnote export as output style
- Data was saved as text file

- Import into other library by using command
- File / Import... with endnote import as filter
- Or



More EndNote information

- “How EndNote can help you with your Research and Thesis” training at Stang Monkolsuk library once every month (free of charge for Mahidol University staffs and students only)
register and reserve your seat at Stang Monkolsuk library website
<http://stang.sc.mahidol.ac.th>
- EndNote user club webboard at Stang Monkolsuk library
- EndNote Guide tour (chapter 3 of the manual come with the software)
- Endnote tutorial at EndNote support website
<http://www.endnote.com/training/>
- Some thai EndNote manuals floating in the Internet



Other EndNote competitiveness

	Reference manager	ProCite	EndNote Web	RefWorks	Zotero
Platform	Desktop	Desktop	Web	Web	Firefox Add-in
Cost	\$200 – 300 U.S.	\$200 – 300 U.S.	Free for ISI subscribers	\$100 U.S. / Year or institute subscription	free



More question please contact

Suang Udomvaraphunt (สรวง อุดมวรพันธุ์)
Multimedia center, Stang Mongkolsuk library
Faculty of Science, Mahidol University.
1st Floor, Physics building

Tel : 0-2201-5727
E-mail : stsud@mahidol.ac.th

